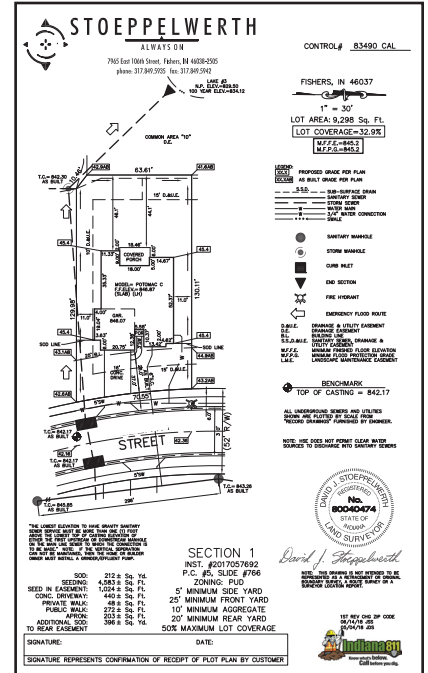



Looking for a Plot / Site Plan of your Property?

The City of Fishers has some residential plot plans for various subdivisions digitally on file. Plot Plans on file are available through the online permitting software, ViewPoint Cloud powered by OpenGov at no cost. You do not need to make a ViewPoint Cloud account. Note: Improvements within easements will require approval of the appropriate utility companies.

- 1 Go to www.fishers.in.us/plotplan which will redirect you to our online permitting software, ViewPointCloud.
- 2 Click the link to the "Search" feature. A window that says "Search for Public Records" will open. Start typing in your address and addresses will begin to populate. Once you see your address, go ahead and click on it.
- 3 If the City has the Plat Plan or Site Plan record on file, it will be located under the Record Type "Residential Plot Plan Request" or "Residential Building Permit". Click on that Record Type.
- 4 Under "Files" any Plot Plans or Site Plans on records will be available as an PDF document. Click the "File" and click "Download". You will then be prompted to save the Document to your computer.



An example of a Residential Plot Plan.



NEED ASSISTANCE?

Planning staff is available Monday - Friday from 8:30 AM to 4:30 PM if you have any questions. Please use the contact info below.



Know what's below.
Call 811 before you dig or visit www.indiana811.org

"WHAT DO THESE LETTERS MEAN?"

Acronyms or abbreviations are commonly used on Plot / Site Plans. Here are commonly used ones and what they mean.

| | |
|---|--|
| B.L. - Building Line | D.U. & S.E. - Drainage, Utility and Sanitary |
| C.A.E. - Conservation Area Easement Easement | |
| CR. ACC. E. - Cross Access Easement | F.M. - Force Main |
| D.E. - Drainage Easement | L.M.E. - Landscape Maintenance Easement |
| D.E. & S.S.E. - Drainage Easement & Sanitary Sewer Easement | R/W - Right of Way |
| | W - Water Line |