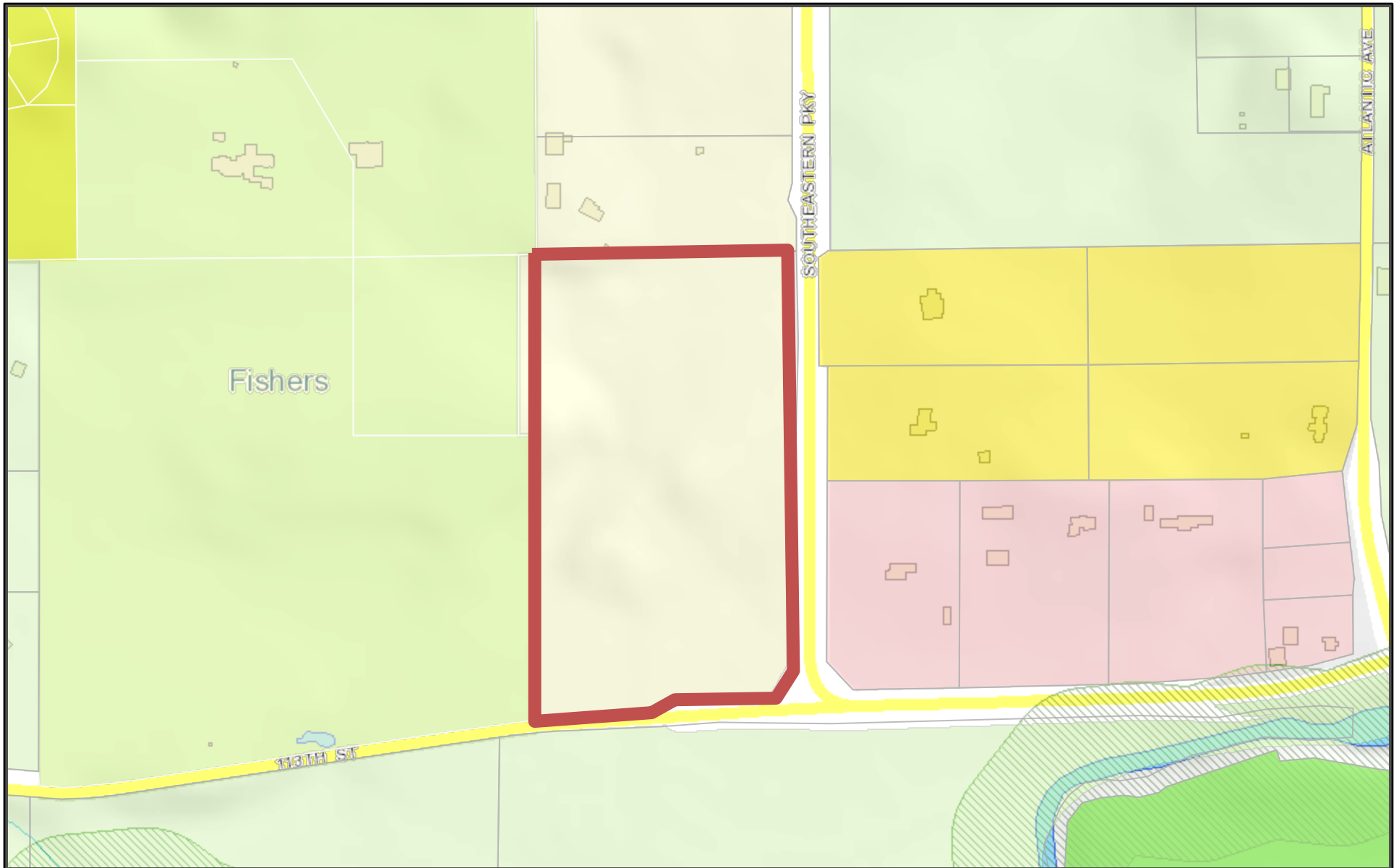


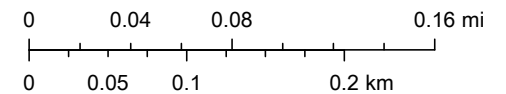
Courtyards of Fishers PUD Rezone - Low Density Suburban Residential



February 14, 2022

- | | | | | |
|----------------------|--------------------------|----------------------|------------------------|--------------------|
| Parcels | CompPlan_Open | Estate Residential | Core Residential | Regional Mixed Use |
| Fishers CompPlan_Use | Low Density Suburban Res | Attached Residential | | |
| Other | Special Study Area | Suburban Residential | Neighborhood Mixed Use | |

1:4,800



Fishers, IN GIS